

# AUCTION

**SATURDAY FEB. 20, 2010** Sale Time: **9:43 A.M.**

**Bad Weather Day: Saturday February 27**

LOCATED: SKELLYTOWN, TX--From Skellytown Take Hwy. 152 East 2 Miles, Or From Pampa, TX Hwy. 152 & Price Rd. (Stop Light--Allsup's) Take Hwy. 152 West 9 Miles. **WATCH FOR SIGNS!!!!**

## HICKERSON PLUMBING DAN HICKERSON OWNER

Auctioneers Statement: The Following Will Be Sold At Public Auction.

For Information: **Lyndon Loyd, 806-826-5850 or 334-0407**

**BACKHOE**

1—98 John Deere 310E, 3670 Hrs



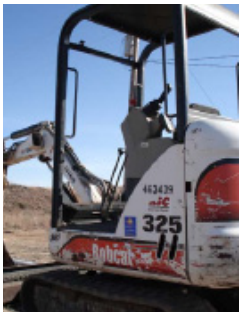
**DITCHWITCH**

1—99 Ditchwitch 3700 Ditcher, New Eng., 2025 Hrs.



**EXCAVATOR**

1—03 Bobcat 325 Rubber Track w/2-12" & 14" Buckets



**SCISSORS LIFT**

1—98 JLG Mod. 2032E2 Elec. Scissors Lift



**ONE TON TRUCK**

1—05 Dodge Ram 3500 Cummins Turbo Diesel Dually 4 X 4, Four Door Truck, A/T, AM/FM/CD, A/C, w/J-I Flatbed, RKI Tool Boxes, G/N Ball, Ranch Hand Grill Guard, 110K Miles



1—07 Dodge Dually Bed, Fender Damage

**CAMPER TRAILER**

1—04 Outpost Lite By IT 25' Camper Trailer

**TRAILERS**

1—Circle M 35' Dove Tail T/D Axles (10K) G/N Trailer, Fold-over Ramps, Center Pop-up

1—06 Legend 40' T/D Axle (10K) G/N Flatbed Trailer, Ramps, Side Ratchet Rails, Tool Boxes

1—Shop Made S/A, 24' Pipe Trailer



**LINE LOCATOR**

1—Rycon Mod. 8872 Line Locator

**LASER LEVEL**

1—Spectra LL200 Laser Level

**RIDGID TOOLS**

1—Ridgid See Snake Sewer Camera

1—Ridgid K-50 Sink Machine

1—Ridgid Mod. 400 Elec. Pipe Threader

1—Ridgid Mod. 700 Elec. Handheld Threader

3—Ridgid Threader Handles, 00-R, 0-R & U-2

1—Ridgid Pipe Threaders, 1/2, 3/4, 1, 1 1/4, 1 1/2 & 2"

2—Ridgid #1-2 Pipe Cutters

1—Ridgid BC-210 Vise

1—Ridgid #246 Cast Iron Pipe Cutter

1—Ridgid Mod. 44-S, 2 1/2-4" Pipe Cutters

1—Lot Vars. Ridgid Threader Heads

**POLY PIPE FUSION MACHINES**

1—McElory Mod. 2LC Fusion Machine, Like New

1—Central Fusion Machine, Not Complete

1—Central Mod. 4SW Hot Plate

1—Zapper Fusion Tool

**HAMMER & CORE DRILLS & CEMENT SAWS**

1—Bosch Brute Elec. 60 lb. Jack Hammer

1—Dewalt Demo Hammer

1—Milwaukee Core Drill w/ Stand

1—Hilti Stand For Core Drill  
 1—Wacker Cement Saw

**LADDERS**

1—Werner Fiberglass 16' Ext.

1—Werner 10' Fiberglass Step

2—Louisville 8' Fiberglass Step

1—Cuprum 6' Fiberglass Step

**TOOLS**

1—Dewalt DG4300 Generator

1—Mark I Mod. CS-10K Contractors Table Saw

1—Craftsman 10" Radial Arm Saw

1—Milwaukee Sawzall

1—Milwaukee Contractor Bit Kit

1—Milwaukee R/A Drill

1—Milwaukee Hole Saw Kit

1—Bosch Hole Saw Kit

1—Dewalt Mini Grinder

1—Simplex 1-2 Cast Iron Cutters

1—Wheeler Mfg. Cast Iron Chain Pipe Cutters

1—Evercraft Metric Deep Socket Set

1—Lenox Hole Saw Kit

1—Dremel Tool

1—Turbo Torch w/Bottle

1—Lot Hi-Lift Jacks

1—Lot Masonry Bits

1—Lot Hole Saw Core Bits

1—Lot Boomers & Come Alongs

1—Lot Adj. Jack Stands

1—Two Wheel Dolly

**PLUMBING SUPPLIES**

1—Lot 1/2-2" Copper Fittings: Sweat-On, T's, Collars, F & M Adaptors, Unions, Reducers, 90's & 45's

1—Lot Schedule 40, 1/2-4" PVC: DWV Fittings, Y's, T's, Reducers, 90's, 45's, 1/6 Bends, 1/16 Bends, St. 45's & 90's

1—Lot Schedule 40, 3/4-6" PVC Pressure Fittings: 90's, T's, Reducers, St. 90's, Telescoping Couplings, 45's, 1/16 th Bends

1—Lot 1 1/2-4" Test Plugs

1—Lot 1 1/4-2" Spuds

1—Lot 1/2" Brass Nipples, Threaded To 6"

1—Lot Brass Hose Fittings

1—Lot Brass 1/2-1" Swing Check Valves

1—Lot 1/2 & 3/4" Brass 90's

1—Lot 3/4" Brass Nipples

1—Lot 1/2-1" Brass Couplings

1—Lot 1/2-1" Black Nipples

1—Lot 1/2-1" Gas Valves

1—Lot 1/2" Gas Flex Line

1—Lot 1/2-1" Black Fittings: T's, 90's, Unions, Collars, Street 90's, Caps, Plugs

1—Lot Schedule 80, 3/4-4" PVC Nipples

1—Lot Delta Repair Parts

1—Lot Deck Type Fittings

1—Lot Lead Hi-Boots

1—Lot Chrome T Traps

1—Lot Tracer Wire

1—Lot Toilet Seats

1—Lot 3" Double Wall Vent Pipe

1—Lot 3" Double Wall Adj. 90's

1—Lot Douglas Brass Flush Valves

1—Lot Am. Standard Ball-cocks

1—Lot MJ Retainers

1—Lot Iron & C-900, 4-8" Pipe Size Trap Saddles

2—Gerber Self Rimming Lavatories

2—C-900, 10" Pipe Retainers

1—Lot Wax Seals

1—Lot 1 1/4" Chrome Traps

1—Lot Cast Iron Shower Drains

1—Lot 8" Roof Drains

1—Lot Commode Supplies

1—Lot Fluid Master Ballcocks

1—Lot Copper Water Flexes

1—Lot 1/4 Turn Stops

1—Lot Toilet Flappers

1—Lot ADA Lab Guards

1—2" Settlement Trap

1—Lot 1/2-3" Nibco Gate Valves

1—Lot 2-6" Clevis Hangers

1—Lot Water Heater Pans

1—Lot 1-4" Galvanized Fittings

1—Lot MJ Bolts

1—Febco 1 1/2" Double Check Valve

1—Lot 1-2" Poly Pipe Fittings: T's, Reducers, Caps, Couplings

1—Stainless Steel 8" Power Seal Coupling

1—Lot Single Wall Vent Pipe

1—Lot Vars. Pumps

1—Lot Pipe Insulation

1—Lot Vars. MJ Fittings

2—C-900, 4" Joints Water Main Pipe

1—Little Giant Dominator, 4/10ths hp 9S Series Sewer Pump

1—Little Giant Liquid Level Control

1—Watts Double Check Valve

2—Gas Tight Tees

**NONCLASSIFIED**

1—Lot Metal & Wooden Parts Shelves

1—Metal S/P Office Desk

1—Lot Vars. Office Supplies

1—Lot Ice Melt Salt

1—Advantage Floor Buffer

1—Echo Gas Weed Eater

1—Poulan Gas Chain Saw

1—Rubbermaid 10 Gal. Water Can

1—Lot Gas Cans

1—Lot Hazmat Suit

2—Trademan 37 Gal. Pickup Mount Fuel Tanks

1—100 lb. L.P. Bottle

4—10' Stock Panels, L/N

1—12' Stock Gate, L/N

1—Lot Alum. Overhead Wire

## SUPER NICE AUCTION

General Listing Of Quality Items Hope To See You Sale Day

### UPCOMING AUCTIONS

Pampa Estate Pampa Gun & Artifact Wheeler Consignment Canadian Consignment

Please Contact Us For Your Auction Needs 334-0407

OUR WEB ADDRESS www.loydsaction.com E-Mail Address lyndon@loydsaction.com

Cash—Company or Personal Check with Bank Letter of Credit. Statements Made Sale Day Supercede Any Advertisement. We are Agents and Agents Only! We Appreciate and Solicit Your Business!

Not Responsible for Accidents!

LYNDON LOYD (806) 826-5850 (7119)